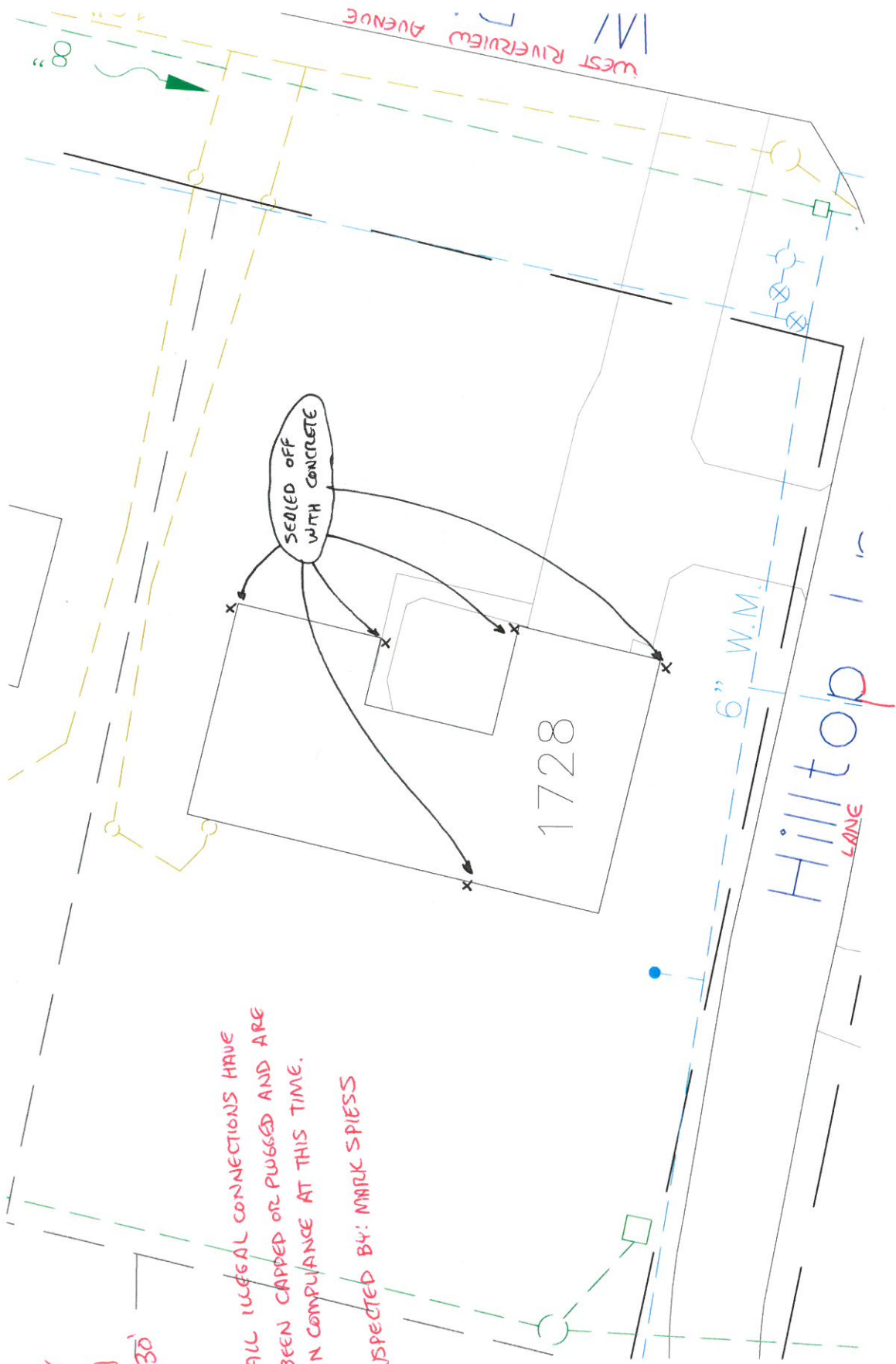


1728 WEST RIVERVIEW AVENUE
ILLEGAL DOWNSPOUT INVESTIGATION

2016
N
1" = 30'



ALL ILLEGAL CONNECTIONS HAVE
BEEN CAPPED OR PLUGGED AND ARE
IN COMPLIANCE AT THIS TIME.

INSPECTED BY: MARK SPIESS